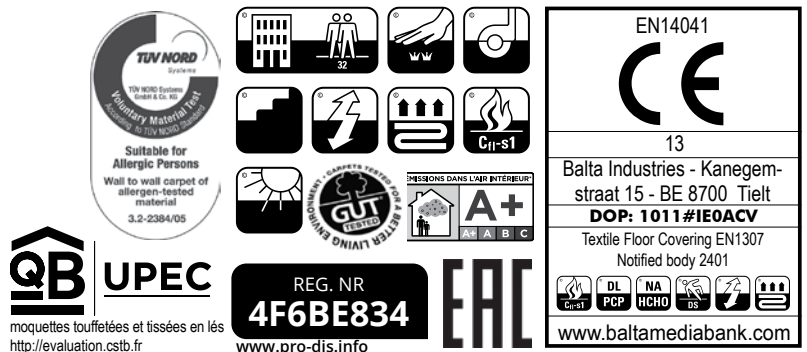
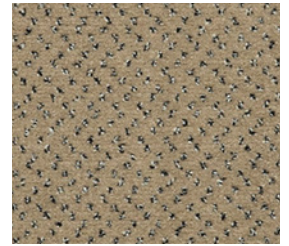


CONSTRUCTION	Tufting 1/10" cut pile COC	PERMANENTLY ANTISTATIC	ISO 6356
STRUCTURE	Tufté 1/10" velours COC	ANTISTATIQUE PERMANENT	< 2 kV
STRUKTUR	Getuftet 1/10" COC-Velours	PERMANENT ANTISTATISCH	
STRUCTUUR	Getuft 1/10" velours COC	PERMANENT ANTISTATISCH	
PILE MATERIAL	100% PA 6 IMPREL®	IMPACT NOISE RATING	ISO 140-8
COMPOSITION DU VELOURS		ISOLATION PHONIQUE	25 dB ΔLw
POLMATERIAL		TRITTSCHALLVERBESSERUNG	
POOLMATERIAAL		GELUIDSISOLATIE	
PRIMARY BACKING	Woven PP	SOUND ABSORPTION	ISO 354
SUPPORT	PP tissé	ABSORPTION PHONIQUE	0.15 αw
TRÄGERMATERIAL	Bändchengewebe PP	SCHALLABSORPTIONSGRAD	
TUFTDOEK	Geweven PP	GELUIDSABSORPTIE	
SECONDARY BACKING	Action Back	THERMAL RESISTANCE	ISO 8302
DOSSIER		RÉSISTANCE THERMIQUE	0,07 m² K/W
RÜCKEN		WÄRMEDURCHLASSWIDERSTAND	
TAPIJTRUG		WARMTEDOORLAATWEERSTAND	
PILE WEIGHT	Ca. 730 gr/m²	FASTNESS TO LIGHT	ISO 105-B02
POIDS DU VELOURS		SOLIDITÉ A LA LUMIÈRE	≥ 5-6
POLEINSATZGEWICHT		LICHTECHTHEIT	
POOLGEWICHT		LICHTECHTHEID	
TOTAL WEIGHT	Ca. 1.660 gr/m²	COLOUR FASTNESS TO WATER	EN ISO 105-E01
POIDS TOTAL		SOLIDITÉ À L'EAU	≥ 4-5
GESAMTGEWICHT		WASSERECHEITHEIT	
TOTAAL GEWICHT		WATERECHTHEID	
PILE HEIGHT	Ca. 4 mm	FIRE RESISTANCE	EN 13501-1
EPAISSEUR DU VELOURS		COMPORTEMENT AU FEU	Cfl-s1 (if glued)
POLHÖHE		BRENNVERHALTEN	
POOLHOOGTE		BRANDGEDRAG	
TOTAL HEIGHT	Ca. 6,5 mm	RUBBING FASTNESS	EN ISO 105-X12
EPAISSEUR TOTALE		SOLIDITÉ AU FROTTEMENT	≥ 4
GESAMTHÖHE		REIBECHTHEIT	
TOTALE DIKTE		WRIJFECHTHEID	
TUFT DENSITY	Ca. 225 000/m²	NUMBER OF COLOURS	14
NOMBRES DE POINTS		NOMBRES DE COULEURS	
NOPPENZAHL		ANZAHL FARBEN	
AANTAL PUNTEN		AANTAL KLEUREN	
PILE DENSITY	Ca. 0.113 g/cm³	WIDTH	EN ISO 3018
DENSITÉ DU VELOURS		LARGEUR	ca. 400 cm
POLROHDICHTHEIT		BREITE	some colours in ca. 500 cm
POOLDICHTHEID		BREEDTE	
CLASSIFICATION	EN 1307		
CLASSEMENT	32 - LC2		
KLASSIFIKATION			
CLASSIFICATIE			
UPEC	U3 P3 E1 C0 Certification CSTB:09/261		
CASTOR CHAIR SUITABILITY	EN 985		
CHAISE À ROULETTES	A: intensive use		
STUHLROLLENEIGNUNG			
ROLSTOELGESCHIKTHEID			
STAIR SUITABILITY	EN 1963		
ESCALIERS	A: intensive use		
TREPPENEIGNUNG			
TRAPPENGESCHIKTHEID			



fortesse SDE new AB



▲ 138 4+5 m



▲ 40 4 m



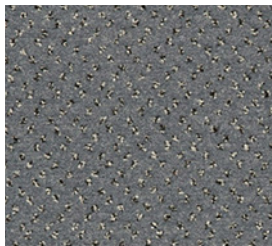
▲ 144 4&5 m



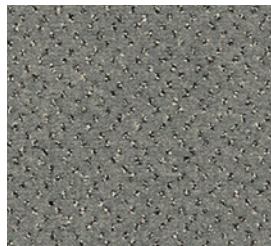
▲ 12 4&5 m



▲ 197 4&5 m



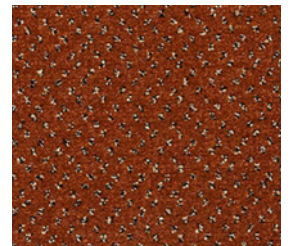
▲ 96 4&5 m



▲ 90 4&5 m



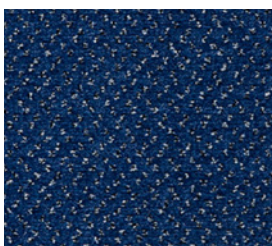
▲ 39 4 m



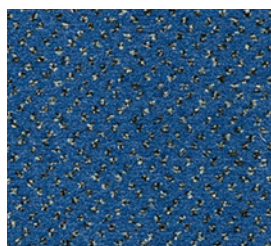
▲ 64 4 m



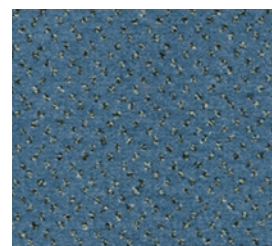
▲ 299 4 m



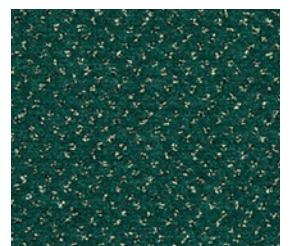
▲ 177 4&5 m



▲ 174 4 m



▲ 173 4&5 m



▲ 24 4 m

 arc **edition**